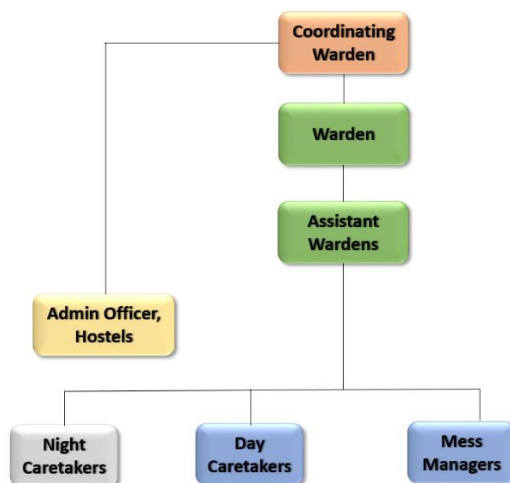


27 HOSTEL AND OTHER FACILITIES

27.1 HOSTELS

The Institute has 15 hostels (9 for boys & 6 for girls) with state-of-the-art facilities. The total hostel accommodation for boys is over 5700 and for girls, about 2500. This includes AC room accommodation as well in some of the hostels.

Each hostel has the following administrative structure



All the hostels across the campus are managed by the Coordinating Warden. The warden is the administrative head of each hostel. The day caretakers have the responsibility of addressing all issues related to hostel room maintenance. All mess related issues are handled by the mess manager. Medical exigency and disciplinary related issues are taken care by the Administrative Officer.

The hostels are provided with all basic facilities including water coolers fitted with water purifiers, common TV room, common reading room, common gym, laundry facility etc. Adequate dining and night canteen facilities are available in all hostels.

First Year undergraduate students will be provided shared accommodation only (on merit basis) as per details below:

Hostel (Boys) First-Year UG only	Type of Room	Total Seats
C	Two Seater	380
B	Three Seater	726
H	Three Seater	480

Hostel (Girls) First-Year UG students	Type of Room	Total Seats
E	Three Seater	174
G	Three Seater	174
I	Three Seater	141

First-Year post graduate and doctoral programs students (only girls) will be provided limited accommodation (on merit basis) only on campus.

The hostel facility is available on a limited basis (subject to availability) for the first year boys taking admission to any of the masters and doctoral programs.

NRI/Foreign students may reserve their rooms in advance.

The Students must occupy rooms specifically allotted to them. However, in exceptional cases, concerned warden may allow students to change rooms. Change of accommodation from one hostel to another during a semester/term is generally not permitted. However, if the seats are available in another hostel, student is allowed to shift only after the approval of Coordinating Warden.

Allotment made to a student is subject to cancellation if he/she fails to occupy the room in the prescribed time. Students will also forfeit their rooms if they fail to clear their all dues to the hostel/mess by the prescribed time.

Hostel accommodation is allotted with the condition that the student agrees to abide by the rules and regulations of the hostel. A student shall be expelled from the hostel on violation of any rule and regulation.

Any damage to hostel property will call for severe disciplinary action. In case of any violation of hostel rules, suspected unlawful activities on the basis of security risk perceived, the Warden/Coordinating Warden reserves the right to break open the rooms.

Accommodation in hostels is subject to availability.

27.2 HOSTEL DISCIPLINE

The hostellers are required to abide by the hostel rules laid down by the hostel administration from time to time. No student should stay away from his/her room during the night except in exceptional cases with prior written permission of the warden. Any student, who wishes to leave the campus temporarily or otherwise, should obtain the permission of warden in writing. Those applying for permission must state the date and time of his/her intended departure and return as well as the destination.

- Students are advised to avoid partying, playing loud music, singing aloud, shouting or making all types of noises which are likely to distract the attention of other hostellers.
- Students are not allowed to keep powered vehicles on campus. Only bicycles are allowed.
- Entry timings at the main gate is restricted to 7:00 PM. A parent's app to keep the parents informed about student movements is in place. In the hostels, student attendance record is maintained. It is mandatory for all the hostel residents to mark their attendance daily with the night caretaker.
- No smoking and drinking is allowed on the campus.
- Anti-ragging and drug abuse policies are strictly practiced.
- Pets of all kinds are prohibited inside the hostels. Feeding stray dogs or cats in the hostel premises is not permitted.
- No male visitors are allowed to visit girl students in the hostel premises.

- Parents must supply the name of a local guardian for their wards.
- Students are advised not to keep large cash or valuables in their hostel room. Institute will not be responsible for any loss, whatsoever.

27.3 MEDICAL FACILITIES

The Institute has a well-equipped Health Centre and Ambulances.

The services of the Medical Officer and the Staff Nurse are available. Institute has tie-up with nearby hospitals also.

Reimbursement up to ₹2,000/- in an academic year is admissible for emergency cases duly recommended by the warden/medical officer.

27.4 LAUNDRY SERVICES

The institute provides complimentary Laundry services to all students residing in hostels. The students have to get their Laundry cards issued to avail these services.

27.5 CANTEEN AND OTHER FACILITIES ON THE CAMPUS

- Banks - State Bank of India & ICICI Bank
- ATMS of SBI, ICICI & HDFC Banks
- Post Office
- Stationery and Book Shop
- Courier and Photocopier Booth
- Cafeterias
- Coffee Stall
- Grocery Shop
- Amul, Verka Stall
- Fruit, Juice Stall
- Departmental/Confectionery Store
- Dry Cleaner / Laundry
- Saloon/Parlour
- Multi Cuisine Restaurants